

# Pitney Bowes Spectrum™

## Enterprise Data Quality Solution

### UNIVERSAL ADDRESSING MODULE



## Key Components

- **Get Candidate Addresses -**  
Returns a list of possible matches for a given address
- **Get City State Province -**  
Returns the city and state/province for a given postal code
- **Get Postal Codes -**  
Returns the postal codes for a given city
- **Validate Address -**  
Standardises addresses using U.S., Canadian, and international postal data

## OVERVIEW

Validate and correct addresses both domestically and abroad. With the Pitney Bowes Spectrum Enterprise Data Quality Solution Universal Addressing Module you will have no problems meeting all the U. S. Postal Authority Guidelines and Publications for CASS®, SERP® and UPU® standards. The Universal Addressing Module automatically corrects, completes and formats address data in real time for all your mailings. You can earn greater postal discounts while assuring that your valuable communications reach intended recipients.

The Universal Address Module provides support for:

- Coding Accuracy Support System (CASS®), Delivery Point Validation® (DPV™), Residential Delivery Indicator® (RDI™), Intelligent Mail® Barcoding Options
- Early Warning System® (EWS™) – weekly updates from the postal service of new addresses not yet part of the USPS® monthly cut
- LACS Link™ – Locatable Address Correction System as part of the E911 street name conversion initiative (Pitney Bowes Business Insight can automatically identify and update the street names)
- SuiteLink™ – Appends suite numbers to business addresses
- English & French Address Formats in Canada
- International characters with umlauts and accents

## Increase accuracy, meet standards and save time & money

The Pitney Bowes Spectrum Enterprise Data Quality Solution Universal Addressing Module ensures accurate capture of customer addresses at the point of data entry. By preventing bad addresses from becoming part of your database, you can improve customer satisfaction, and your profitability, month after month.

The Universal Addressing Module can be used in batch mode, real-time mode or as a hosted service i.e., SaaS capability), depending on which option you need. All hosted services provide the same features and functionality as do the local services.

### The CASS® Certified™ Advantage

The Spectrum Enterprise Data Quality Solution Universal Addressing Module is CASS® Certified™ by the USPS and meets all requirements of the Coding Accuracy Support System.

## Capitalize on more reliable address data – Trust in the Pitney Bowes Spectrum™ Enterprise Data Quality Solution

Knowing your customers is key to growing customer relationships—and that means you need accurate, properly formatted addresses. The Pitney Bowes Spectrum Enterprise Data Quality Solution provides the data quality tools you need to create and maintain accurate rich customer information.

# Pitney Bowes Spectrum™

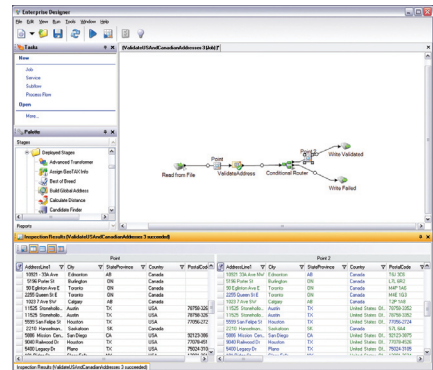
## Enterprise Data Quality Solution

### UNIVERSAL ADDRESSING MODULE

With the Spectrum Enterprise Data Quality Solution, you can clean, match and consolidate customer data to leverage the most up-to-date, complete view of your customer across your organisation.

Supports Windows and Unix platforms, including 64 bit versions. Easy integration with enterprise applications and compatible with:

- Windows 2000/XP/2003
- Solaris – 9, 10
- HP-UX – 11.11, 11.23 (PA-RISC), 11.23i (Itanium)
- AIX – 5.3, 6.1
- Red Hat Linux – 4, 5.2
- Suse – 9, 10
- Client Tools (Windows Thick Client)
  - Enterprise Designer – batch Flow Inspection
  - Management Console



Windows-based tools and drag-and-drop interface make it easy for you to quickly parse and format information into usable data fields.

- Client API's
  - C, C++, COM, .Net, Java, XML
    - 32 bit (Windows & Unix)
  - C, C++, COM, .Net, Java, XML
    - 64 bit (Windows & Unix)
  - Web Services

For more information, call us today at **+44.1753.848.200** or visit [www.pbinsight.com](http://www.pbinsight.com).

#### EUROPE/UNITED KINGDOM

Minton Place  
Victoria Street  
Windsor, Berkshire SL4 1EG  
main: 44.1753.848200  
fax: 44.1753.621140  
[www.pbbusinessinsight.co.uk](http://www.pbbusinessinsight.co.uk)

#### UNITED STATES

One Global View  
Troy, NY 12180-8399  
main: 800.327.8627  
fax: 518.285.6070  
[www.pbinsight.com](http://www.pbinsight.com)

#### ASIA-PACIFIC/AUSTRALIA

Level 7  
1 Elizabeth Way  
North Sydney NSW 2060  
main: 61.2.9437.6255  
fax: 61.2.9439.1773  
[www.pbinsight.com](http://www.pbinsight.com)

**PITNEY BOWES BUSINESS INSIGHT IS HEADQUARTERED OUT OF THE UNITED STATES**

### The Pitney Bowes Spectrum™ Solutions and Business Services

#### Spectrum Enterprise Data Quality Solution

- Address Now
- Advanced Matching
- Universal Addressing
- Data Normalisation
- Universal Name

#### Spectrum Enterprise Location Intelligence Solution

- Enterprise Geocoding
- Enterprise Location Intelligence
- Enterprise Routing

#### Spectrum Enterprise Data Integration Solution

- Data Services for Oracle
- Data Services for Siebel
- Data Services for SFDC
- Data Services for SAP
- Sagent Data Flow

#### Spectrum Enterprise Data Governance Solution

- Profiler Plus
- Monitor Plus

#### Spectrum Business Services

- Spectrum OnDemand
- Enterprise Routing
- Global Sentry
- Enterprise Tax Management
  - Sales & Use
  - Payroll
  - Personal Property
  - Insurance Premium Tax
- Business Application Connectors
  - Data Quality Connector for:
    - MySAP CRM v.5.0, v.6.0
    - MySAP ERP v.5.0, v.6.0
    - Siebel Enterprise Apps v.7.8, v.8.0
    - Siebel Industry Apps v.7.8, v.8.0

### PITNEY BOWES BUSINESS INSIGHT

With the industry's most comprehensive set of solutions for maximising the value of customer data, Pitney Bowes Business Insight helps organisations more effectively locate, connect with and communicate to their customers in today's global markets.

